

**TATA MOTORS**  
Connecting Aspirations



**NEXON** *EV* THE ELECTRIC SUV

**DRIVE THE LIGHTNING**



POWERED BY

**ZIPTRON**

### PEACEFUL DRIVE EXPERIENCE

Drive in complete silence.

Smart Regenerative Braking helps maintain a healthy state of charge in the battery.

### TRI-ARROW DESIGN THEME

The futuristic Tri-arrow design is inspired by forward-thinking IMPACT 2.0 design philosophy that makes a statement on the road.



**FLOATING 7" (17.78 cm) HARMAN™  
INFOTAINMENT TOUCHSCREEN**

The infotainment system is positioned at eye level and connects you to the world.

**LAYERED DUAL TONE FINISH WITH ELECTRIC BLUE ACCENTS**

The harmonious colour scheme with premium textures makes for the perfect ambience.

**LEATHERETTE WRAPPED  
FLAT BOTTOM STEERING**

Take charge of the Nexon EV with a firm yet smooth grip to feel the lightning.

**T R U E - B L U E   E L E C T R I C   S U V**



**TRI-ARROW SIGNATURE  
LED TAIL LAMPS**

Here's something to admire for those behind you on the road.



**PROJECTOR HEADLAMPS  
WITH TRI-ARROW DRLs**

Accentuates the headlights for an electrifying presence.



**LIGHTNING STANCE**

16" (40.64 cm) Diamond Cut Alloy Wheels.  
205 mm Ground Clearance (unladen).

**ELECTRIC SUNROOF WITH  
TILT-FUNCTION**

Open up your world as you drive, for the better things in life.

**7" (17.78 cm) TFT DIGITAL INSTRUMENT  
CLUSTER WITH FULL GRAPHIC DISPLAY**

Displays key information showing all key vehicle parameters in one glance.



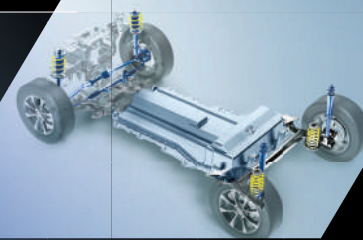
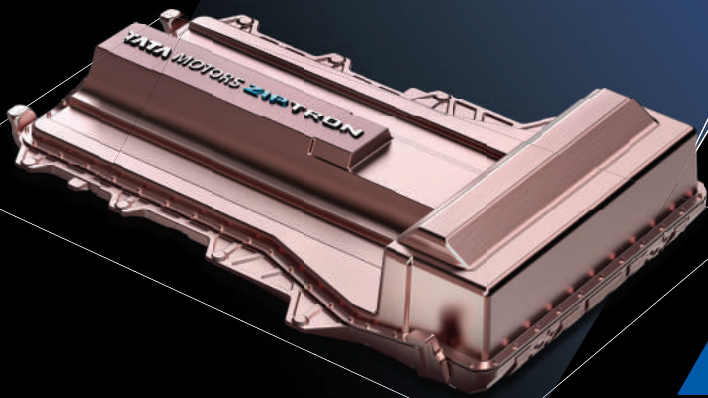
**PREMIUM LEATHERETTE SEATS**

The luxurious leatherette seats are intuitively designed with attention to detail and fine craftsmanship.



**30.2 kWh Li-ION BATTERY WITH IP 67 CERTIFICATION**

Powered by state-of-the-art Ziptron technology, the battery gives you the ability to be lightning quick on the road.



**SUSPENSION**

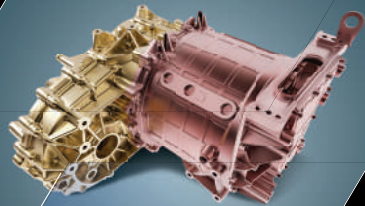
Dual-path strut suspension ensures comfortable ride and handling.



**HILL ASCENT ASSIST AND HILL DESCENT ASSIST**

Keeps you in control of the road whether going uphill or downhill.

**P E R F O R M A N C E**



**ELECTRIC MOTOR POWER**

Experience pure, unadulterated electric performance with peak output of 129 PS\* and torque of 245 Nm\*.

**CHARGING**

When you drive the lightning, the charging ought to be fast too.  
Fast charges in just 60# minutes.

And for convenience there is the option of regular charging from any 15 A plug point.  
Charges in 8.5# hours.

Comes with an onboard AC charger of 3.3 kW.



**REMOTE COMMAND**

Control your Nexon EV from anywhere.

# TECHNOLOGY

ZCONNECT APP WITH 35 CONNECTED CAR FEATURES  
ACROSS ALL THREE VARIANTS

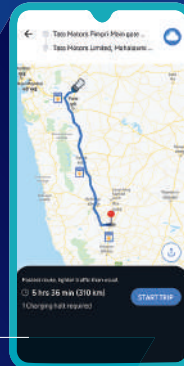
## ONE-CLICK TRACKER

Know where your Nexon EV is parked when it is difficult to locate.



## NAVIGATE YOUR WAY

Travel with the Nexon EV's efficient navigation map and get information about charging stations on the go.



## REMOTE DIAGNOSTICS

Get a detailed and holistic health report of the car's battery, motor and other critical functions.



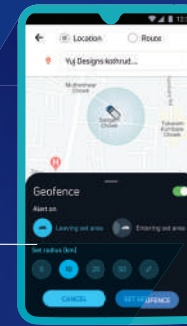
## CHARGING STATION LOCATOR

Know the location of your nearest charging station, always.



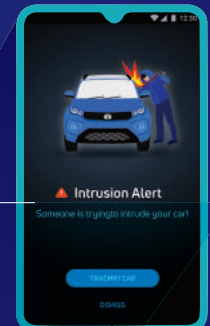
## GEO-FENCING

You can receive an alert and can track your Nexon EV if it crosses a secure radius.



## INTRUSION ALERT

Get instant notification alerts in case of unauthorized access into your Nexon EV.





**MULTI-DRIVE MODE: DRIVE | SPORT**

You can either choose the Drive Mode or experience 60% additional torque in the Sport Mode.



**AUTOMATIC CLIMATE CONTROL**

Standard across variants, it gives you complete control of the temperature inside your Nexon EV.

**REAR AC VENT**

Because rear seat passengers shouldn't miss out on the experience of lightning fast cooling.



**GRAND FLOOR CONSOLE WITH TAMBOUR DOOR**

A console that enhances cabin aesthetics and provides smart storage options as well.



**COOLED GLOVE BOX**


Keep things fresh and cooled with this multi-utility storage unit.

**BOOT SPACE**

350 liters boot space that's expandable up to 690 litres with a 60:40 rear seat split.



# C O M F O R T   A N D   C O N V E N I E N C E



**CABIN COMFORT**

Enjoy a noiseless drive in a spacious and comfortable cabin.

**CENTRAL ARMRESTS**

Ensure comfort is on your side, when you get on the road for those long drives – at both the front and the rear.



**ABS WITH EBD AND CSC**

The Anti-lock Braking System with Electronic Brake-force Distribution and Cornering Stability Control gives you absolute control to take charge of the road.



**CAMERA BASED REVERSE PARK ASSIST (WITH DYNAMIC GUIDEWAYS)**

Hassle-free parking, always. The live camera-feed is your dynamic guideway when you put your Nexon EV in reverse.

**S A F E T Y**

**DUAL FRONT AIRBAGS**

Dual front airbags as standard across all three variants.



**ISOFIX AS STANDARD**

Get absolute protection for your child with the ISOFIX child-seat mount.

**FORTIFIED CABIN**

The high-strength reinforced steel structure protects the passenger cabin by absorbing impact energy, thus ensuring you are always protected.



## NEXON EV - TECHNICAL SPECIFICATIONS

<b>Electric Drivetrain</b>			
Motor (type)	Permanent Magnet Synchronous Motor		
Electric motor power (PS)	129*		
Electric motor torque (Nm)	245*		
Drive modes	Multi-drive modes (Drive   Sport)		
Battery pack	30.2 kWh High energy density Lithium-ion battery pack		
Thermal management system	Liquid cooled		
Ingress protection for motor and battery pack	IP 67		
Acceleration (0-100 kmph in sec)	9.9		
Gradeability (%)	34%		
Emission	Zero tailpipe emission		
<b>Smart Drive Features</b>	<b>XM</b>	<b>XZ+</b>	<b>XZ+ Lux</b>
Smart Regenerative Braking	•	•	•
Hill Ascent Assist	•	•	•
Hill Descent Assist	•	•	•
<b>Transmission</b>			
Transmission	Single speed transmission for automatic like drive		
<b>Dimensions and Weight</b>			
Length x Width x Height (mm)	3993 x 1811 x 1606		
Wheelbase (mm)	2498		
Ground clearance (mm) - unladen	205		
Boot space (litre)	350		
Kerb weight (kg)	1400		
<b>Steering</b>			
Steering	Electrically power assisted		
Turning circle radius (m)	5.1		
<b>Brakes</b>			
Front, Rear	Disc, Drum		
<b>Suspension</b>			
Front Suspension	Independent MacPherson strut with coil spring		
Rear Suspension	Twist beam with dual path strut		
<b>Wheels and Tyres</b>			
Size	R16 215/60 LRR		
Type	Steel	Alloy	Alloy
<b>Charging</b>			
Charging standard	CCS 2		
Estimated regular charging time (SOC 10% to 90% from any 15A plug point)	8.5# hours		
Estimated fast charging time (SOC 0%-80%)	60# minutes		
<b>Warranty</b>			
Battery pack & motor warranty	8 Year / 1,60,000 km (whichever is earlier)		
Vehicle warranty	3 Year / 1,25,000 km (whichever is earlier)		

	XM	XZ+	XZ+ Lux
<b>Exterior</b>			
Projector headlamps with Tri-arrow DRLs	•	•	•
Tri-arrow signature LED tail lamps	•	•	•
Floating roof	•	(Dual tone roof)	(Dual tone roof)
Piano black ORVMs with turn indicators	•	•	•
Roof rails	-	•	•
Door side body cladding for scratch protection	•	•	•
Electric blue accents on humanity line, side beltline, X-Factor	•	•	•
Shark fin antenna	•	•	•
Wheel covers	•	-	-
16" Diamond cut alloy wheels	-	•	•
Body coloured door handles	-	•	•
<b>Comfort and Convenience</b>			
Electric sunroof with tilt-function	-	-	•
Auto headlamps	-	-	•
Rain sensing wipers	-	-	•
Fully automatic temperature control	•	•	•
Rear AC vents	•	•	•
Height adjustable driver seat	-	•	•
Height adjustable front seatbelts	-	•	•
Adjustable rear seat head rest	-	-	•
Remote central lock	•	•	•
Smart key with push-button start (PEPS)	•	•	•

	XM	XZ+	XZ+ Lux
Power windows (all 4)	•	•	•
Electrically operated ORVM	•	(Auto fold)	(Auto fold)
Fast USB charging port at front	-	•	•
12V front power outlet	•	•	•
12V rear power outlet	-	•	•
Electric tailgate release	•	•	•
Rear wiper and wash system	-	•	•
Boot lamp	-	•	•
<b>Interior</b>			
Tri-arrow themed interiors	•	•	•
Flat bottom steering wheel	•	•	•
Leatherette wrapped steering wheel	-	•	•
Door trim insert	-	Fabric	Leatherette
Grand central console with front armrest and sliding tambour door	-	Fabric	Leatherette
Cup / Can holder on central console	•	•	•
1 Litre bottle holder in all doors	•	•	•
Umbrella holder in front doors	•	•	•
Rear seat central armrest with 2 cup holders	-	-	•
Multi-utility glove box	•	•	•
Cooled and illuminated glove box	-	•	•
Rear seat cushion 100% flip and flat fold	-	-	60:40 Seat Split
Seat upholstery	Fabric	Fabric	Premium Leatherette
<b>Car Infotainment</b>			
ConnectNext Infotainment system by Harman™	•	-	-
ConnectNext 7" (17.78 cm) Floating Dash-top touchscreen infotainment by Harman™	-	•	•
8-speaker system by Harman™	4 Speakers	•	•
AM/FM with RDS (RDS - Regional FM/AM station auto tuning)	•	•	•
Bluetooth connectivity	•	•	•
SMS / WhatsApp notifications and read-outs	-	•	•
Apple Car Play and Android Auto	-	•	•
Image and video playback	-	•	•
Steering Mounted Audio, Phone and Voice Controls	•	•	•
What3Words™ address based navigation	-	•	•
<b>Instrument Panel</b>			
7" (17.78 cm) TFT digital instrument cluster with full graphic display	•	•	•
Voice alerts - door open, seatbelt reminder and many more	•	•	•
<b>Safety and Security</b>			
Puncture Repair Kit	•	•	•
Driver and co-driver airbags	•	•	•
ABS with EBD and CSC	•	•	•
Driver seatbelt with pretensioners, load limiters and crash-locking tongue	•	•	•
Child-safety rear door locks	•	•	•
Follow-me-home headlamps	•	•	•
ISOFIX anchorage points for child-seat	•	•	•
Front fog lamps	-	•	•
Rear defogger	-	•	•
Camera based reverse park assist (with dynamic guideways)	Sensor Only	•	•
<b>35 Smart Connected Features with Tata Motors ZConnect Mobile App</b>			
<b>Safety and Security</b> - Intrusion alert, Stolen vehicle tracking, Panic notification, Remote immobilization etc.	•	•	•
<b>Location Based Services</b> - Find nearest charging and service station, Find my car, Geo-fencing, Time-fencing etc.	•	•	•
<b>Remote Commands</b> - Remote door lock/unlock, Remote cooling, Remote vehicle diagnostics, Remote lights ON/OFF etc.	•	•	•
<b>20+ Vehicle Health Alerts</b>	•	•	•
<b>Trip Analytics and Driver Behaviour Score</b>	•	•	•
<b>Social Tribes</b>	•	•	•

nexonev.tatamotors.com | f /TataMotorsElectricMobility | t /TataMotorsEV | i /tatamotorselectricmobility | v /tatamotorselectricmobility | 1800 209 8282 • STANDARD • NOT AVAILABLE

Images and Illustration are indicative and for information purposes only. All features/specifications are not available in all variants and may vary for different variants. Specifications/features subject to change without prior information. Please consult an authorized Tata Motors dealer for latest information on features/specifications before deciding to place an order. Colours may not match the actual colours due to printing limitations. \*Under test ambient temperature conditions. \*\*Terms and conditions apply.

### COLOURS



Tata Motors Passenger Vehicle Business Unit,  
Tata Motors Limited, 4th floor Ahura Centre, Mahakali  
Caves Road, MIDC, Andheri (East), Mumbai 400093.