

The next gen Tiago.ev  
**just — WOW**





# — wow design

With its bold, contemporary design, the Next Gen Tiago.ev turns everyday presence on the road into a just wow moment.



— WOW  
exterior

— **lux beam LED headlamps**

Turn heads wherever you go with a design that looks modern from every angle.



— **halo lightbar connected tail lamps**

Leave a lasting impression with stylish tail lamps adding to the distinctive rear design.



— **LED DRLs**

Light up every drive with bright LED head lamps and signature DRLs for focussed visibility.



— **R14 hyperstyle wheels**

Add more wow to every drive with sporty R14 Hyperstyle wheels.



**dual — tone black roof**

Add a sporty contrast that brings more wow to every glance.



### — shark fin antenna with GPS

A sleek Shark Fin Antenna that adds style to the roofline. Integrated GPS support brings functionality to the wow factor.



### — cosmo grain textured wheel arch cladding

Take on rough roads with added protection and a rugged stance.



### — chrome line door handles

Refined chrome detailing that makes every entry feel a little more wow.

— wow interiors





## — fabricia luxe dashboard

A refined layered finish that adds a premium feel across the cabin.



## — sportluxe steering wheel

Stay in control with smart steering-mounted functions at your fingertips.



## — satin chrome inner door handles

Elegant chrome accents that bring subtle sophistication to every touchpoint.



### — cosmograin textured pillar trims

Bold textured detailing inspired by rugged urban design language with sustainably crafted pillar and door trims with 20% recycled plastic components.



### — premium dual tone interior theme

A layered cabin theme designed to surround every drive with wow.



# — WOW Tech and comfort

Inside the Next Gen Tiago.ev, smart tech and thoughtful comfort come together to make every drive feel quietly just wow.



## — digital island cluster

All your key driving information displayed in one New Gen Digital Island Cluster for you to focus where it matters.



## — wireless android auto™ and apple carplay™

Make every drive safer, easier and convenient as you control music, calls and more without taking your hands off the wheel.



## — Ultra view 26.03cm HD touchscreen infotainment

Bring alive every drive with a large floating HD touchscreen experience that's designed for seamless access to entertainment, navigation and more wow on the go.



## — smartwatch connectivity

Stay connected to your Tiago.ev right from your smartwatch.



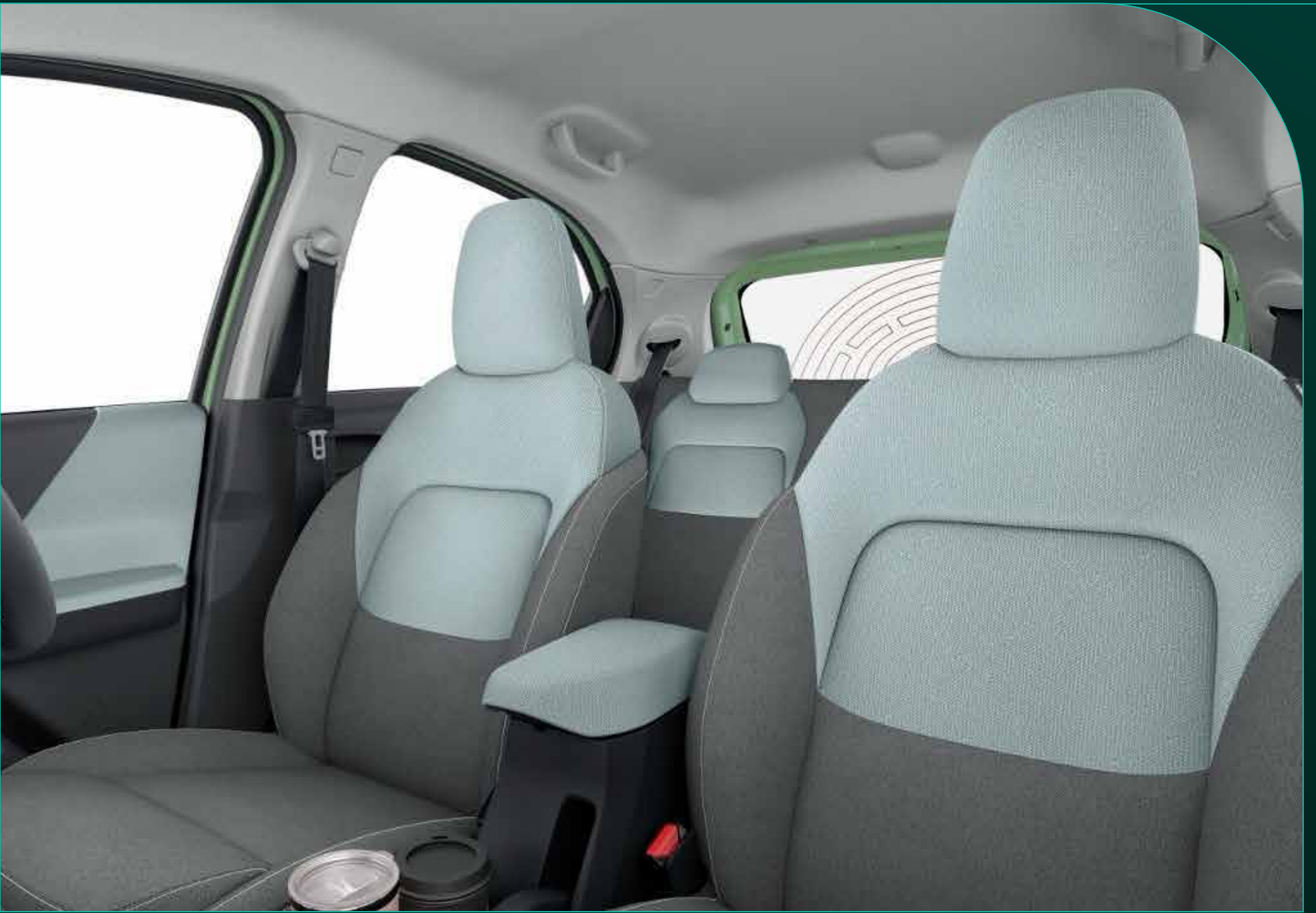
## — dual smartphone deck

Keep both your devices placed, powered and ready for the road.



## — ergo comfort seats

Designed to keep every journey relaxed, supported and comfortable.



## — premium melange fabric seats

Soft-touch upholstery crafted to make everyday drives feel premium.



## — fully automatic temperature Control

Maintains your preferred cabin temperature for uninterrupted comfort.



### — rotary controlled knob

A smooth and intuitive way to stay in control while driving.



### — ergo under-thigh support front seats

Feel wow comfort as gentle support beneath your thighs eases every mile.



### — fabric touch armrest with storage

Soft-touch comfort paired with smart storage within easy reach.



**240L<sup>+</sup> — boot space**  
From luggage to groceries, gear up  
for big plans - space that fits it all.



### — all-door soft-touch fabric armrest

Premium touchpoints designed to add comfort for every passenger.



### — passive entry passive start ( PEPS)

Unlock and start your drive effortlessly without reaching for your keys.



### — Rear AC vents

Experience wow with Rear AC vents that gives cooling comfort and helps circulate air better in the back seat.



## — steering mounted controls

Access key functions easily while keeping focus on the road ahead.



## — smart utility spaces

Thoughtfully designed spaces that keep everyday essentials organised.



### — zipfast 65W front type C USB

Charge your devices faster and stay powered for every drive. Enjoy fast charging and experience wow on the go.



### — height adjustable driver seat

Find your perfect driving position for added comfort on every journey.



— autofold and electrically adjustable  
**ORVMs** with turn indicators

Adjust your mirrors easily while adding visibility on every turn.



— **electric tailgate release**

Open your tailgate effortlessly with a push when your hands are full.



## — floating type easy-reach door pull handle

A smart floating design that makes every reach feel effortless.



## — cooled glovebox

Keep drinks cool on the move for comfort wow.

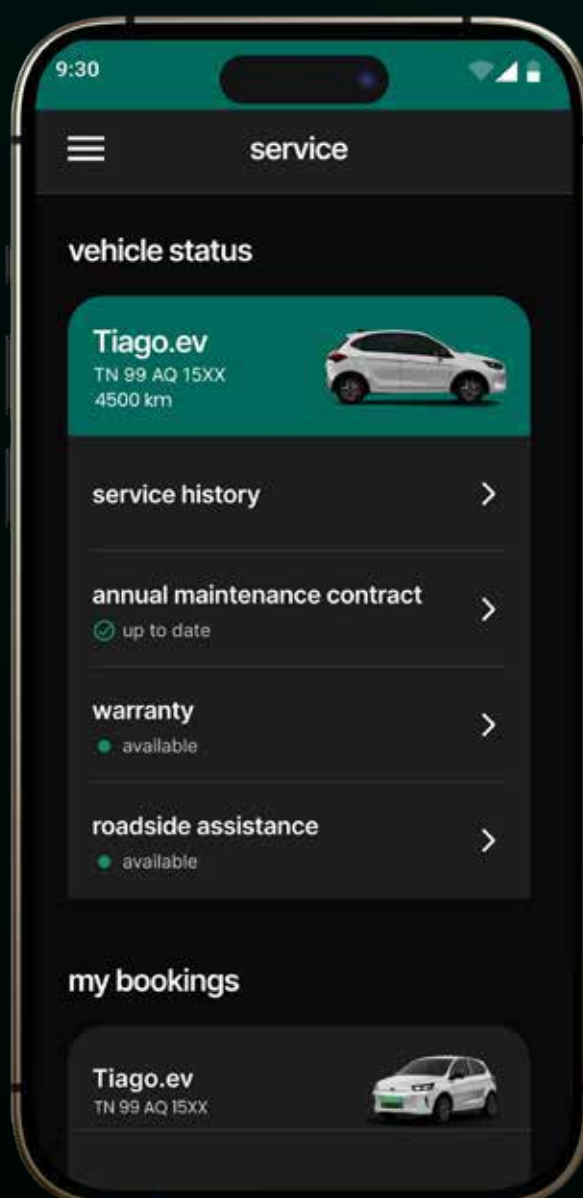
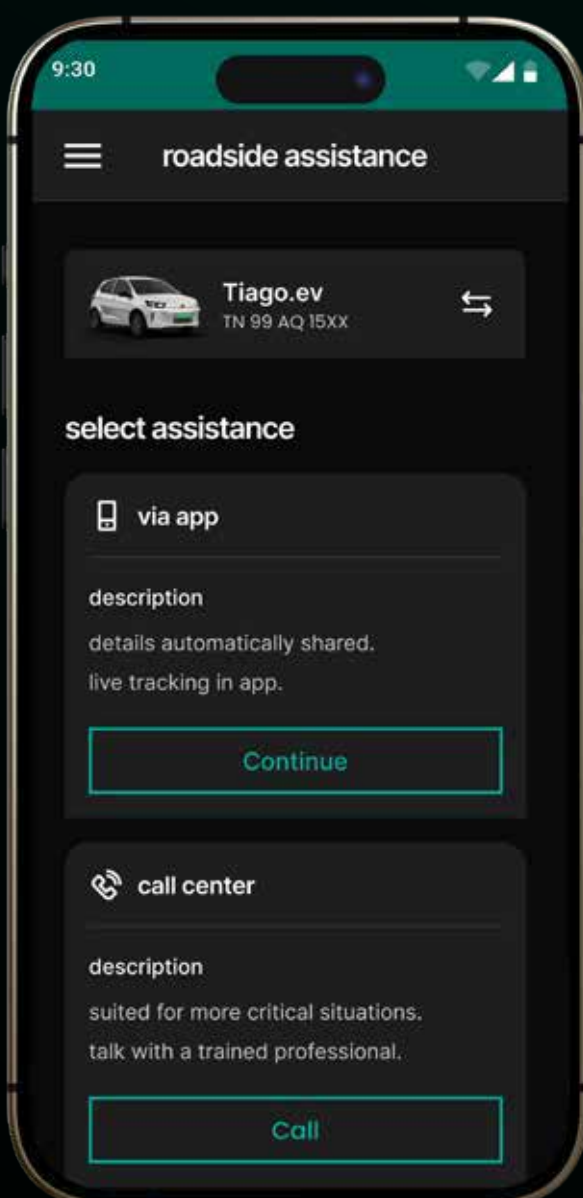
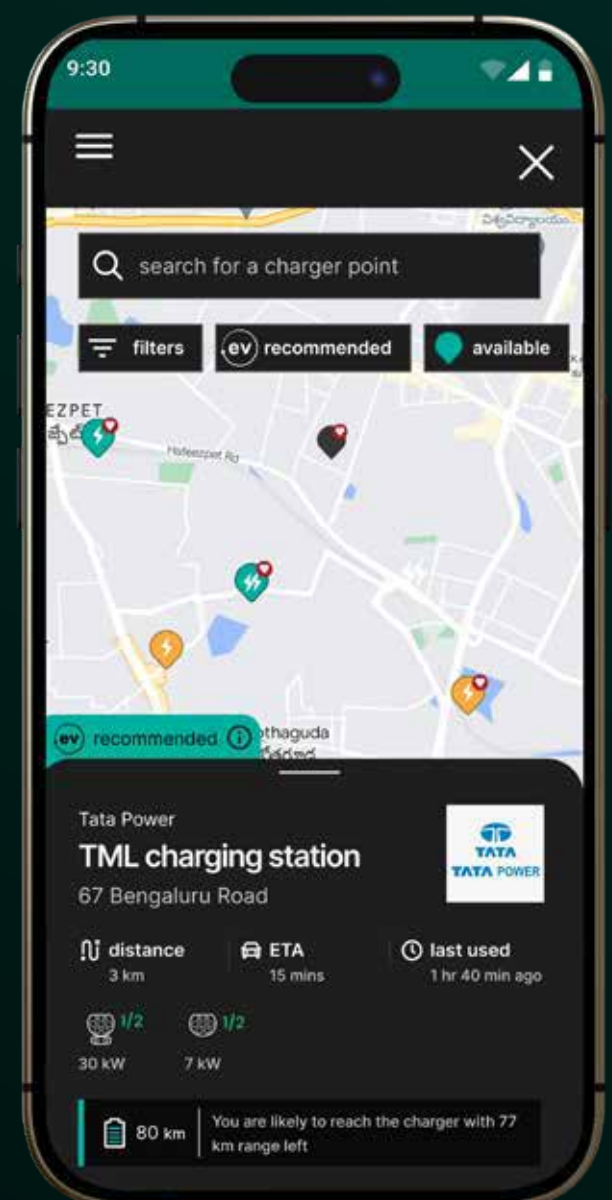
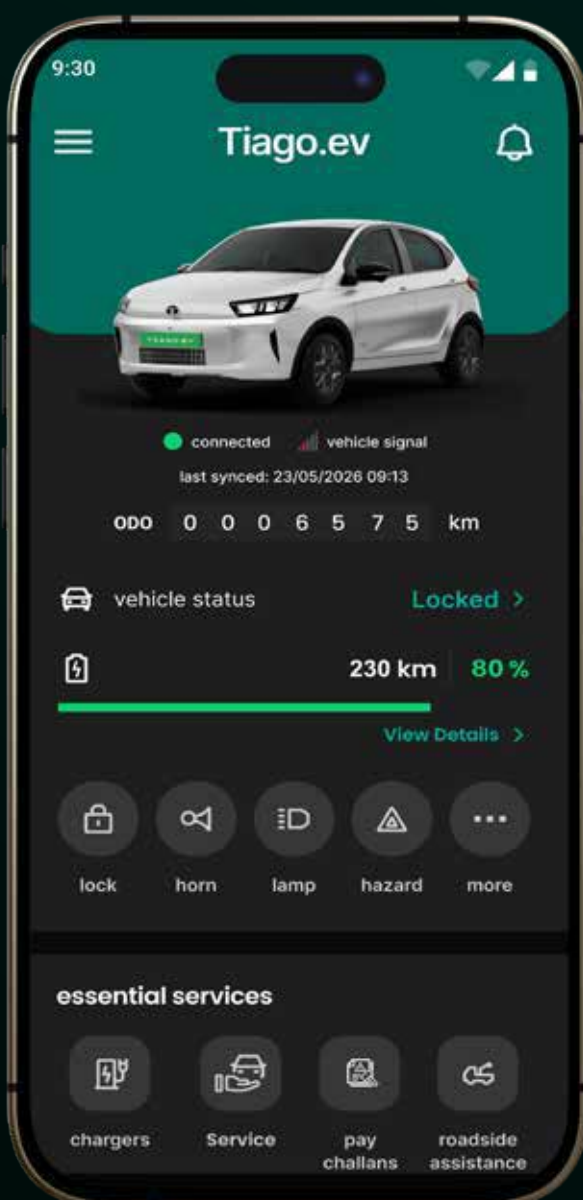


## — iToggle window controls

Enjoy the convenience of effortless window control at every seat.



## — iRA.ev connectivity with 40+ Connected Car Features



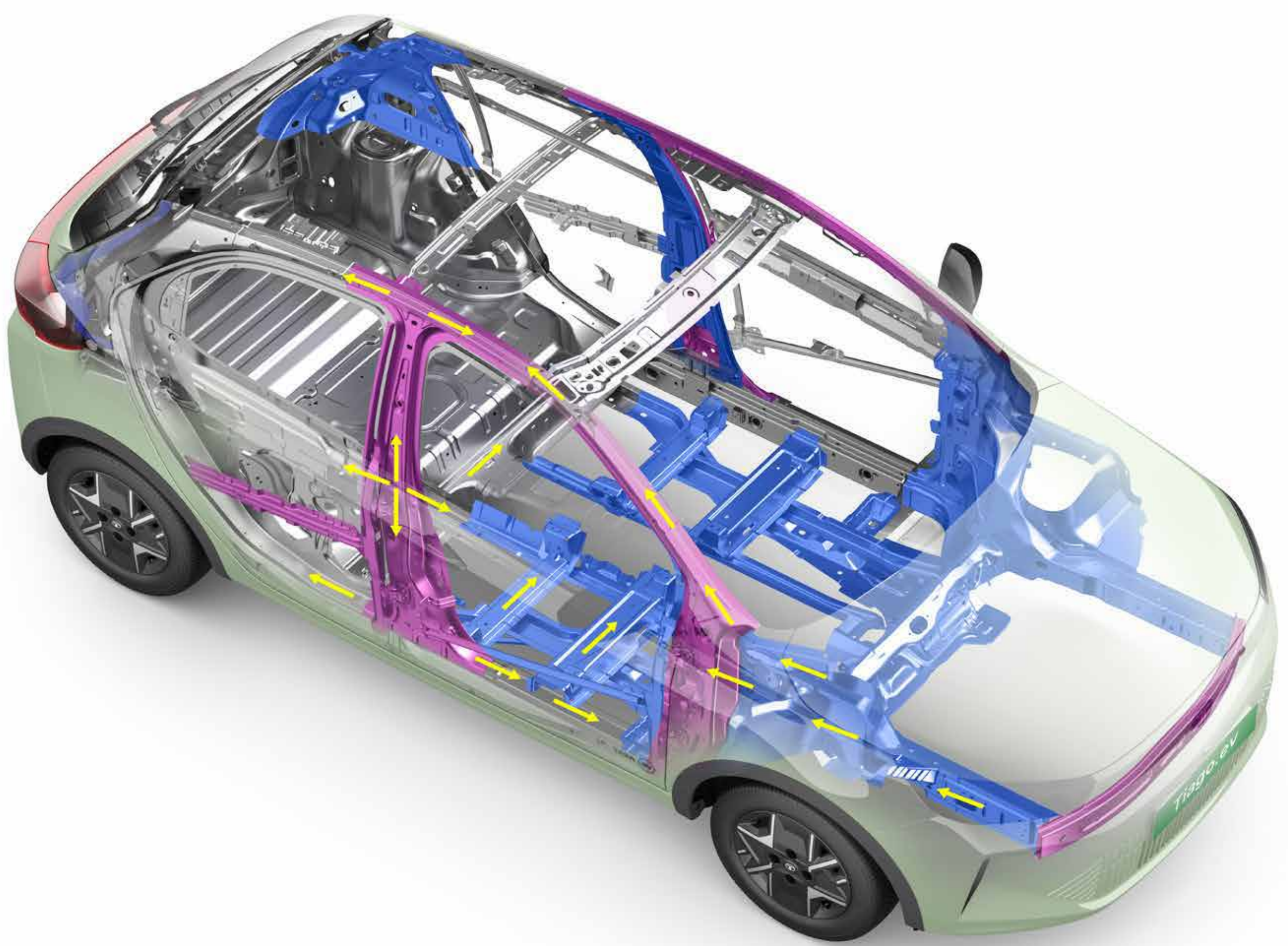
# — wow safety

With advanced safety built in, the Next Gen Tiago.ev gives you confidence that feels simple, steady and just wow.



## — 6 Airbags as standard

Experience all-round protection with confidence that surrounds in critical moments.



## — 360° Impact Protection Body Structure

Engineered to offer stronger all-round protection on every drive.



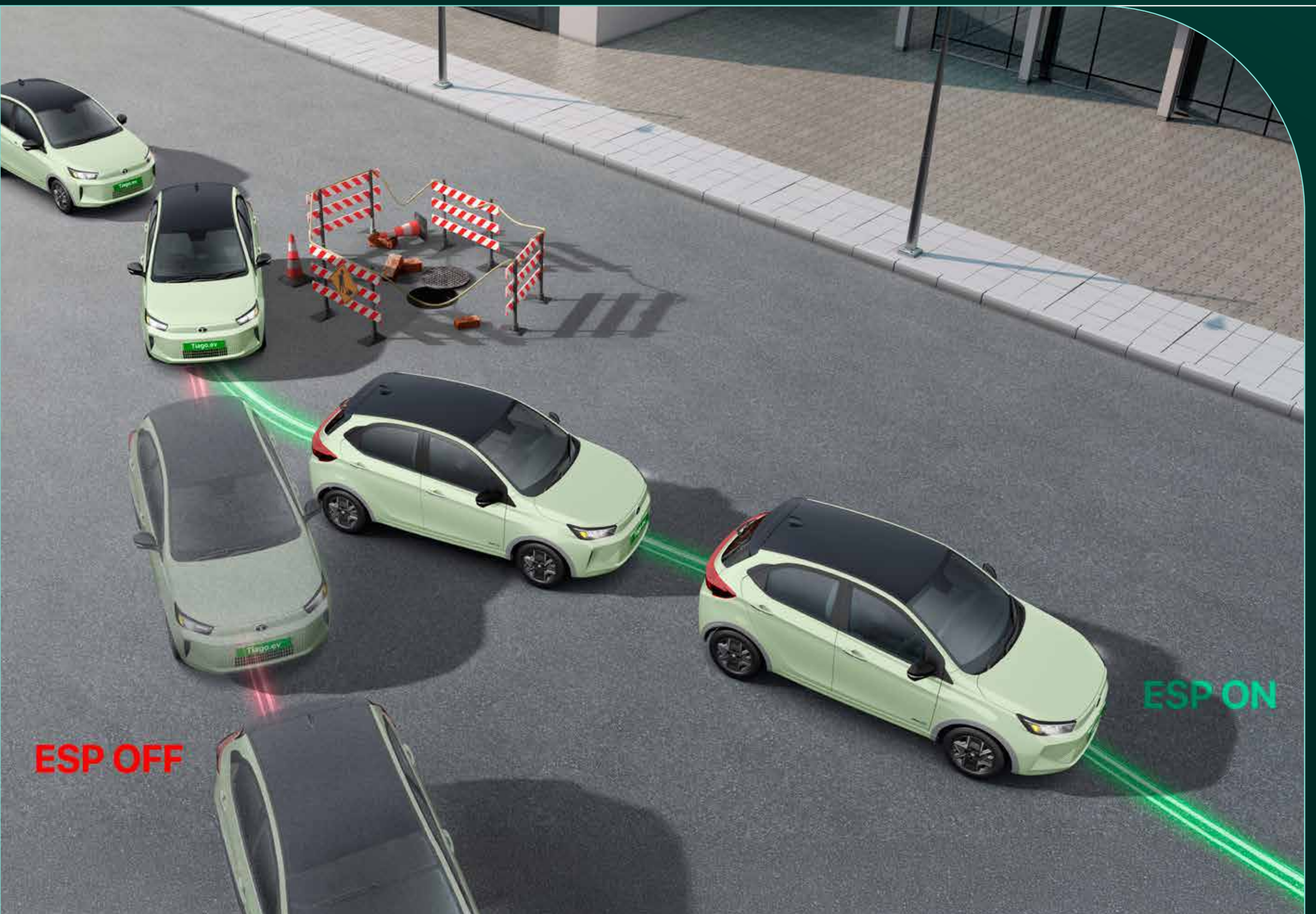
## — 360° SVS<sup>x</sup> HD camera

Tight parking and turns now completely under control with a bird's-eye view of the car that gives extra visibility in blind spots.



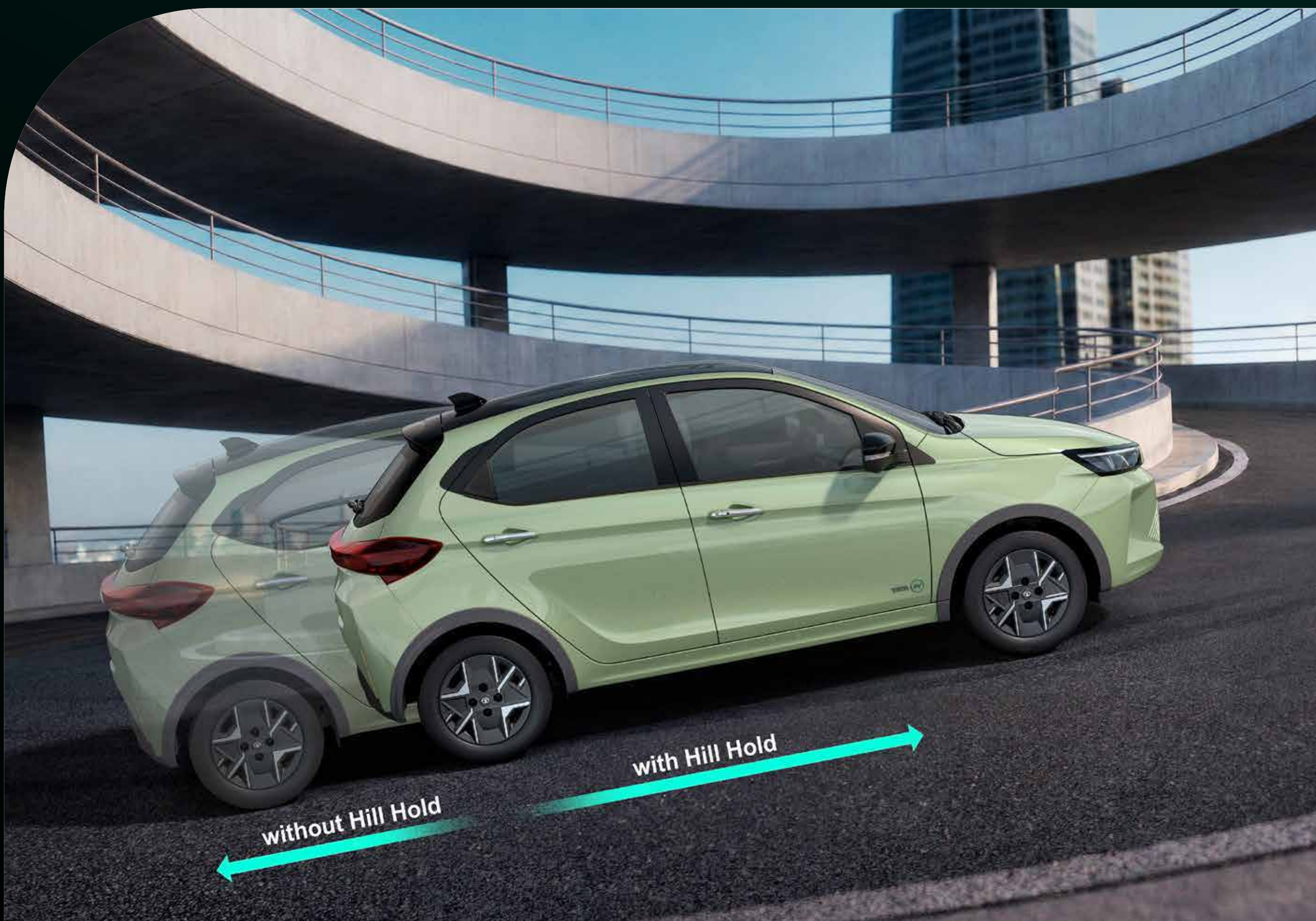
## — blind view monitor

Get added visibility around blind spots for more confident lane changes.



— **electronic stability program (ESP) with traction control**

Enjoy added stability and control across changing road conditions.



— **hill hold control**

Makes uphill starts smooth, steady and stress-free while preventing rollback as you move off on inclines.



### — rear defogger

Clear the rear windshield quickly for better visibility in cold weather.



### — automatic headlamps

Headlamps switch on automatically as visibility conditions change.



## — rear wiper & washer

Maintain a clearer rear view through rain, dust and road spray.



## — follow me home headlamps

Headlamps that stay on briefly after you park because safety doesn't stop when the drive ends.



## — ISOFIX

Secure child seats more safely and conveniently for every journey.



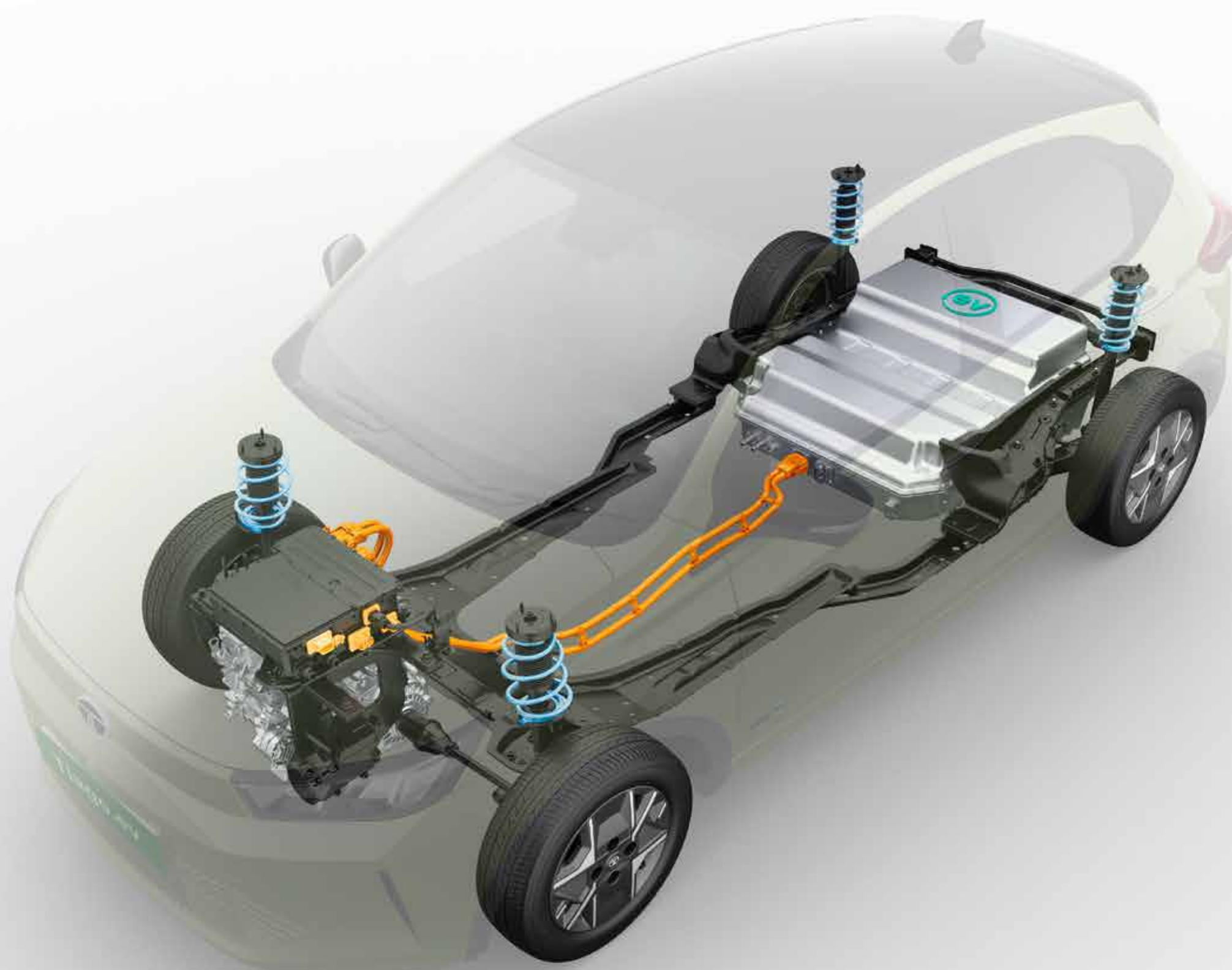
## — iTPMS

Get alerts when tyre pressure drops and drive with confidence.



## — i-High beam alert

Stay more aware during night drives with timely high beam alerts.



## — IP67 ingress protection for motor & battery pack

Built to handle dust and water exposure during everyday conditions.



# — wow charging

Next Gen Tiago.ev also brings significantly faster charging capability, allowing customers to spend less time waiting and far more time simply living with confidence.

**The Tiago.ev now with enhanced faster charging adds 100 km in just 18\* mins, bringing unmatched convenience to everyday electric mobility.**



# — wow confidence

Lifetime\* HV battery pack warranty for the 24 kWh battery pack and for 19 kWh 8 years or 1,60,000 kms (whichever is earlier)

# — wow colours



## Creative+ 24

(dual tone)



dehradun dew



sobo surge



pangong pulse



pure grey



daytona grey



pristine white

## Pure+ 19 / Pure+ 24

(single tone)



sobo surge



pangong pulse



pure grey



daytona grey



pristine white

## Smart 19

(single tone)



pangong pulse



pure grey



daytona grey



pristine white

## Smart 19

Fabricia Luxe Dashboard  
Sportluxe Steering Wheel  
Premium Melange Fabric Seats  
Chrome Line Door Handles  
R14 Steel Wheels  
6 Airbags as standard  
ABS with EBD  
Rear Parking Sensor  
i-TPMS  
ISOFIX  
i-High Beam Alert  
Central Locking with Key  
Digital Island Cluster  
**Multi Drive Modes – City & Sport**  
Multi Mode Regen with Regen Selector  
Automatic with Drive Selection Knob  
**iRA.ev Connectivity with 40+ Connected Car Features**  
Ergo Under-Thigh Support Seats  
Fully Automatic Temperature Control  
12V Power Socket in Central Console (Front)

## Pure+ 19 / Pure+ 24

*(Additional to Smart19)*

HD Rear View Camera  
Day/Night IRVM  
Rear Defogger  
Follow-me-home & Approach Headlamps  
20.32 cm Touchscreen Infotainment System  
Wireless Android Auto & Apple CarPlay  
4 Speakers Surround System  
Steering Mounted Controls  
Electrically Adjustable ORVMs with Turn Indicators  
**USB Charger Front C+C (65W)**  
All 4 iToggle Power Windows  
R14 Wheel Covers  
Shark Fin Antenna with GPS

## Creative+ 24

*(Addition to Pure+24)*

R14 Hyperstyle Wheels  
LED DRLs  
Lux Beam LED Headlamps  
Fabricia Luxe Dashboard  
All-door Soft-touch Fabric Armrest  
360° SVS HD Camera with Multiple 2D/3D Views  
Blind View Monitor  
**Electronic Stability Program (ESP) with Traction Control**  
Hill Hold Control  
Rear Wiper and Washer  
**Auto Defogger (Front)**  
Automatic Headlamps  
Rain Sensing Wipers  
Ultra View 26.03 cm HD Touchscreen Infotainment  
Cruise Control  
Passive Entry Passive Start  
Autofold ORVM  
Electric Tailgate Release  
Cooled Glovebox  
Air Filter (Pollen Filter)  
Rear Parcel Tray  
6-way Adjustable Driver Seat  
Front Armrest with Storage  
Rear AC Vents  
**One-shot Power Window (Driver Side)**

Technical Specifications	Tiago.ev 19.2kWh	Tiago.ev 24kWh
<b>ELECTRIC DRIVETRAIN</b>		
Motor (Type)	Permanent Magnet Synchronous Motor	
Electric Motor Power (kW)	45	55
Electric Motor Torque (Nm)	110	114
Multi Drive Modes	City & Sport	
Battery Pack (kWh)	19.2	24
Thermal Management System	Liquid Cooled	
Ingress Protection for Motor & Battery Pack	IP67	
Acceleration (0-60 km/h in sec)	6.2	5.7
Emission	Zero tail pipe emission	
<b>SMART DRIVE FEATURES</b>		
Smart Regenerative Braking	Multi-Mode Regenerative Braking   4 Levels	
	Level 0 - 1 - 2 - 3   0 - No Regen   3 - Max Regen	
<b>TRANSMISSION</b>		
Transmission	Fully Automatic Drive	
<b>DIMENSIONS</b>		
Length x Width x Height (mm)	3825 × 1684 × 1562	
Wheelbase (mm)	2400	
Boot space (L)	240	
<b>STEERING</b>		
Steering	Electrically Power Assisted	
Turning Circle Radius (m)	5.1	
<b>BRAKES</b>		
Front, Rear	Front - Disc, Rear - Drum	
<b>SUSPENSION</b>		
Front Suspension	Independent Lower wishbone, McPherson (Dual Path) Strut Type	
Rear Suspension	Rear Twist Beam with Coil Spring Mounted on Hydraulic Shock Absorbers	
<b>WHEELS &amp; TYRES</b>		
Size	175/65R14	
<b>CHARGING</b>		
Charging Standard	CCS2	
Portable Charging Cable	Yes	
Charging Options	Home, 3.3 kW AC Wall Box, 7.2 kW AC Wall Box, DC Fast Charger	
Charger Type Included	3.3 kW AC Wall Box	
Estimated regular charging time <sup>▲</sup> (SOC 10% to 100% from any 15A plug point)	~6.9 hrs	~8.7 hrs
Estimated regular charging time <sup>▲</sup> (SOC 10% to 100% from an AC Home Wall Box Charger)	~6.9 hrs	~8.7 hrs
Estimated regular charging time <sup>▲</sup> (SOC 10% to 100% from 7.2 kW AC fast charger)	~2.6 hrs	~3.5 hrs
Estimated regular charging time <sup>▲</sup> (SOC 10% to 80% from 30 KW DC fast charger)	35 min	35 min
Estimated regular charging time <sup>▲</sup> (SOC 20% to 80% from DC fast charger)	30 min	30 min
<b>WARRANTY</b>		
Battery Pack Warranty	8 Year or 1,60,000 km (whichever is earlier)	Lifetime* Warranty and unlimited Kilometers
Motor Warranty	8 Year or 1,60,000 km (whichever is earlier)	
Vehicle Warranty	3 Year or 1,25,000 km (whichever is earlier)	
<b>DRIVING RANGE</b>		
Certified Full Charge Range (MIDC Part 1 + Part 2) (km)	226 <sup>#</sup>	285 <sup>#</sup>
TATA.ev C75 estimated real world driving range (km <sup>^</sup> )	160-170 <sup>^</sup>	205-215 <sup>^</sup>

## Coverage of lifetime HV Battery Warranty is as below:

	First Owner and First Registration		Standard Warranty Second Registration onwards*** (from the date of first registration, whichever occurs first)	
Model	Years	Km	Years	Km
Tiago.ev 24 kWh +	Lifetime*	Unlimited**	8	1.60 lakh

NOW WITH

LIFETIME  
HV BATTERY WARRANTY ®

Disclaimer: Accessories/features shown may not be part of the standard fitment. The specification above are subject to change. Some of the equipments illustrated or described above may not be supplied as standard equipment and may be available at extra cost. Tata Passenger Electric Mobility reserves the right to change specification & equipments of any product without prior notice. Please consult your nearby dealer for full information and availability on colours and trim. ##As per ARAI (under standard testing conditions), actual performance figures may vary depending on various conditions including driving pattern, etc. \*As per internal testing data under test ambient temperature condition. ▲Under ambient test conditions. \*The term lifetime battery warranty is applicable for 24 kWh battery only. \*The term 'Lifetime' refers to the period of fifteen years from the first date of registration of the vehicle at the local regional transport office, in accordance with the Motor Vehicles Act, 1988. The term 'Unlimited' is on the assumption of fair usage by a customer for personal use of the vehicle and therefore excludes extra-ordinary or usage outside the course ordinary course as would be reasonably expected for vehicle not being used for commercial / trade purposes. Summary of Terms and conditions for Lifetime HV Battery Warranty are as below: The specific details of the Terms and Conditions are as published on TATA.ev website (<https://ev.tatamotors.com/service/warranty.html>). The Lifetime HV Battery Lifetime warranty is exclusively applicable under the following vehicle types and conditions: Registrations in the name of private individuals. Registrations made under the company perk car scheme for employees, including subsequent transfers of the vehicle to the same employee. In the event the perk car is sold or transferred to any third party (not being the aforementioned employee), such third party shall be treated as second or subsequent owner for the purposes of the lifetime HV battery warranty. \*\*The term 'Unlimited' is on the assumption of fair usage by a customer for personal use of the vehicle and therefore excludes extra-ordinary or usage outside the ordinary course as would be reasonably expected for vehicle not being used for commercial / trade purposes. \*\*\* It is incumbent on every second (or subsequent) owner to inform TATA Passenger Electric Mobility Limited of the vehicle ownership transfer for HV Battery Warranty to apply. The HV Battery Warranty shall not be available to the second or subsequent owner in the absence of such notification. ^^Smart watch is not part of vehicle accessories. ^^Customers will be able to utilize Ira.ev services for one year from the date of activation. Post completion of one year, customers can subscribe IRA.ev by paying subscription fees. Linked with active Ira.ev login. ^^^Available in select cities. Prices are subject to change without prior information at discretion of TPEML. Contact your nearest Tata.ev dealer for exact prices. TPEM will not be responsible for public charger downtime/ charger malfunction/ vehicle damage due to charger malfunction. +All values pertaining to boot space are measured as per VDA method in Litres. Smart Phone, Smart Watch and Charging Cable is not a part of vehicle accessories. Android Auto™, Apple CarPlay™ are registered trademarks. Tinted glass and Number plates shown are for creative visualization. \*The 360° HD SVS function is designed to enhance driver awareness and provide a better view of the vehicle's surroundings. However, it is not to substitute for careful driving and should be used in conjunction with other safety features and driver judgment. Drivers should be aware of the technology's limitations and remain responsible for the safe operation of the vehicle. T&C Apply.